

UTRADE Stock Options User Guide



Last Update on Apr 2022



Contents

0. Installation & System Requirement
1. Login & Logout
2. Password Setting
3. Price Quote
4. Order Instructions
5. Order Enquiry
6. Account Information
7. Display Setting



0. Installation & System Requirement

System Requirement

CPU: Intel i5 /i7 CPU or above

Memory (RAM): 4GB or above

Operating System: Windows 7 64 bit or above

Region Format: United States

Computers with Intel Dual Core CPU or RAM below 2GB are not recommended.



Installation

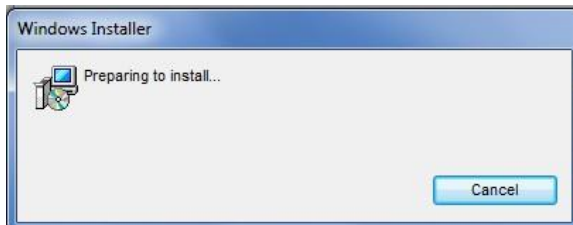
Download the installation program from the below link:

http://www.utrade.com.hk/hk/uob/download/mts_clientlite_uobo_eng_deploy.msi

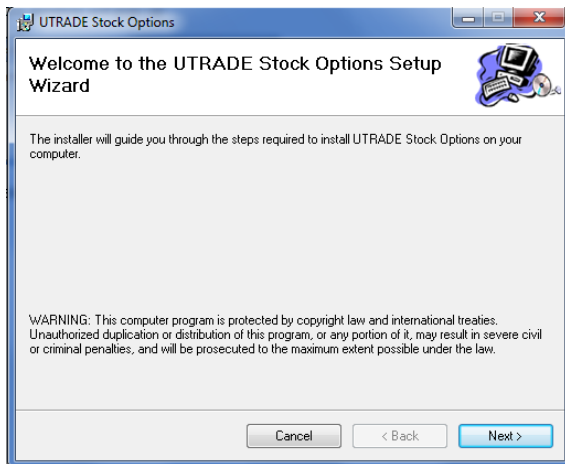
After successful download, double click the below icon to start the installation process.



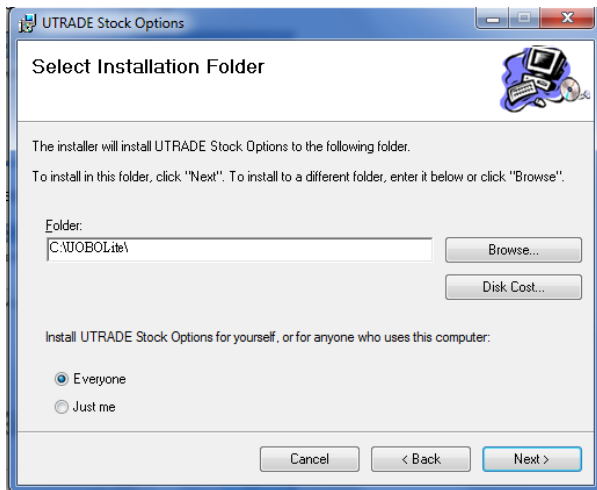
The below window will pop up.



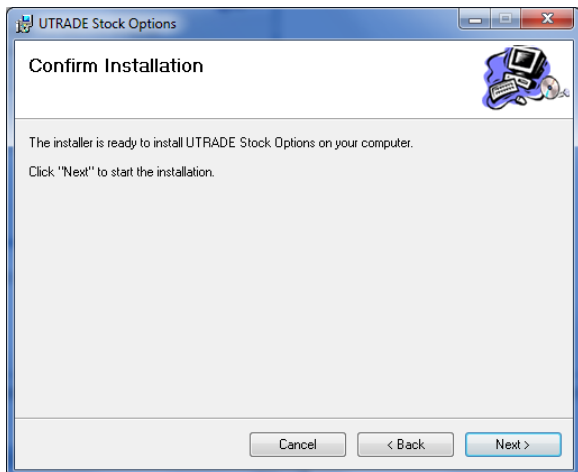
Click Next to proceed.



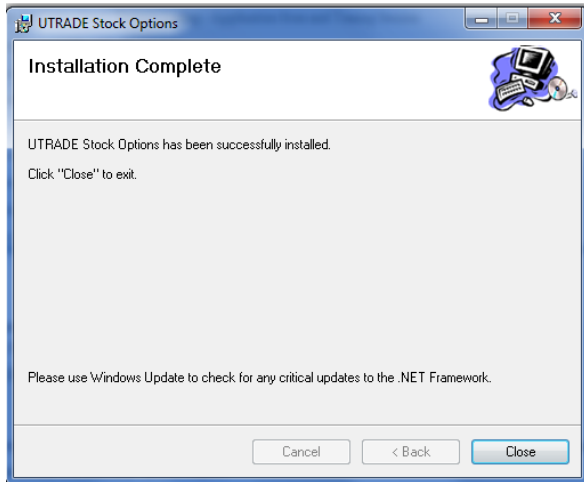
You might select the program location, and click Next to proceed.



Click Next to confirm installation.



After successful installation, the below window will pop up. Click Close to finish the installation procedures.



You can find the shortcut icon of UTRADE Stock Options from your computer desktop.



1. Login & Logout

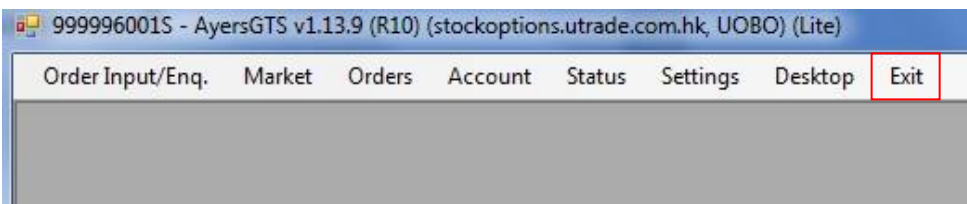
Start the program, select server “UTRADE Stock Options”, enter user code (your UTRADE Stock Options account number) and user password, and click “Login”. You might select traditional Chinese, simplified Chinese or English as the program language.



The below window will pop up. Click “OK” to proceed.



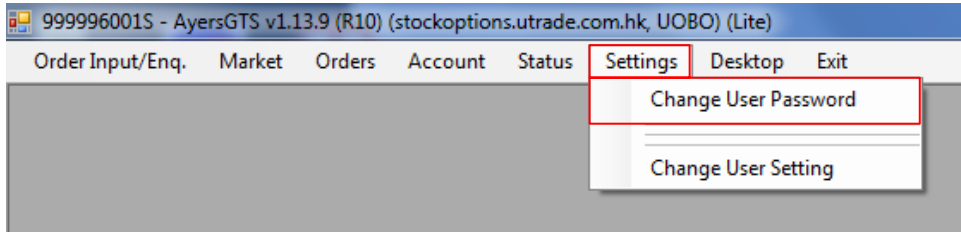
After enter the main window, click “Exit” to logout.



ONLINE TRADING
MADE EASY

2. Password Setting

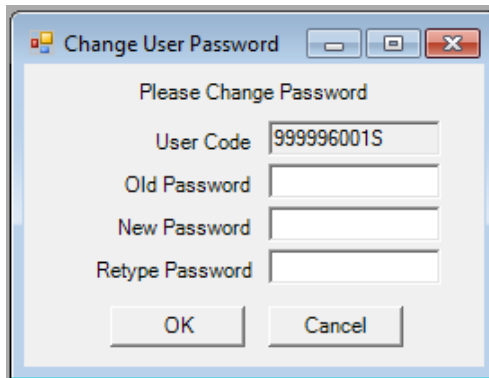
Click “Settings”, and then “Change User Password” to pop up the window.



Enter the Old Password, New Password, Retype the new password, and click “OK” to complete the setting.

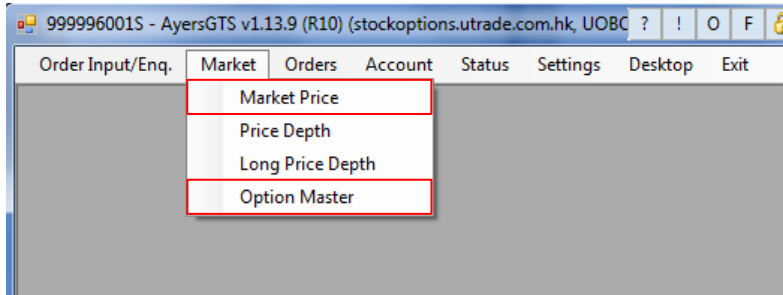
Please note that the new password is case sensitive, must contain at least 1 alphabetic character and 1 numeric digit, and the password length should be between 6 and 12 characters. New password which is the same as the last 3 old passwords cannot be used.

You are required to change the password every 270 days after first login.



3. Price Quote

To enquire about the price quotes of different products, select “Market”, and then “Market Price” or “Option Master”.



Market Price

UTRADE Stock Options provides 10 Price Information Lists to enable you to check with the price information of different products. At the left, select a product, drag and drop to the blank area at the right to display the detailed price information, including Status, BVol, Bid, Ask, AVol, Trade/ IEP, Volume, Trend, Trend%, Total Volume, Day High, Day Low, Day Open, Pre Close, Open Int, Strike Price and Options.

Code	Name	Status	BVol	Bid	Ask	AVol	Trade/IEP	Volume	T
CHT57.50E7	#00941 China Mobile Size 500 2017-05 57.50C	Open					26.82		
CHT60.00E7	#00941 China Mobile Size 500 2017-05 60.00C	Open					24.32		
CHT62.50E7	#00941 China Mobile Size 500 2017-05 62.50C	Open					21.82		
CHT65.00E7	#00941 China Mobile Size 500 2017-05 65.00C	Open					19.32		
CHT67.50E7	#00941 China Mobile Size 500 2017-05 67.50C	Open					16.82		
CHT70.00E7	#00941 China Mobile Size 500 2017-05 70.00C	Open					14.32		
CHT72.50E7	#00941 China Mobile Size 500 2017-05 72.50C	Open					11.82		
CHT75.00E7	#00941 China Mobile Size 500 2017-05 75.00C	Open					9.31		
CHT77.50E7	#00941 China Mobile Size 500 2017-05 77.50C	Open					6.82		
CHT80.00E7	#00941 China Mobile Size 500 2017-05 80.00C	Open	30	4.89	5.12	30	4.55	2	+
CHT82.50E7	#00941 China Mobile Size 500 2017-05 82.50C	Open	30	2.55	2.75	30	2.31	1	+
CHT85.00E7	#00941 China Mobile Size 500 2017-05 85.00C	Open	45	0.93	0.98	124	0.97	1	+
CHT87.50E7	#00941 China Mobile Size 500 2017-05 87.50C	Open	92	0.27	0.3	290	0.28	49	+
CHT90.00E7	#00941 China Mobile Size 500 2017-05 90.00C	Open	30	0.09	0.11	30	0.11	126	
CHT92.50E7	#00941 China Mobile Size 500 2017-05 92.50C	Open	10	0.05	0.06	30	0.05	2	
CHT95.00E7	#00941 China Mobile Size 500 2017-05 95.00C	Open	60	0.02	0.04	120	0.03		
CHT97.50E7	#00941 China Mobile Size 500 2017-05 97.50C	Open			0.05	120	0.02		

Right click inside the Price Information List to Add Product, Remove Selected Product(s), Remove All Product(s) or Edit Heading of the Price Information Lists. In addition, there are quick buttons for Price Depth, Enter Order, Trade Ticker, Quote Request or Option Master.

1	2	3	4	5	6	7	8	9
Code	Name	Status	BVol	Bid	Ask	AVol	Trade/IEP	Volunt
ABC	ABC						3.65	

- Add Product... (Ins)
- Remove Selected Product(s) (Del)
- Remove All Product(s)
- Edit Heading...

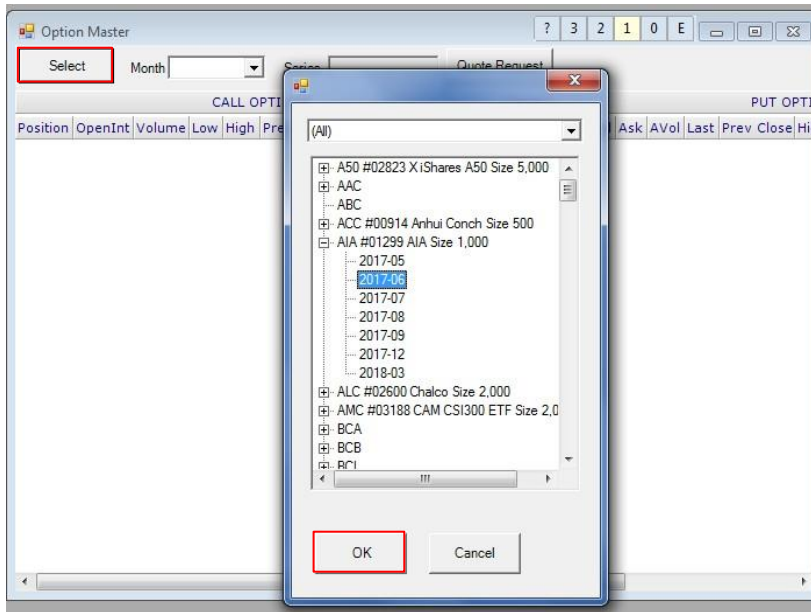
- Price Depth
- Enter Order
- Trade Ticker
- Quote Request
- Option Master

- Show Technical Chart (DZHI)
- Product Information



Option Master

In Option Master, you can click “Select” to browse the product list. Click the corresponding product and months, and then OK.



The detailed information of the selected product will be shown accordingly, including Call Options, Put Options, Strike, BVol, Bid, Ask, AVol, Last, Prev Close, High, Low, Volume, Open Int and Position, etc.

CALL OPTIONS																	Center					PUT OPTIONS											
Volume	Low	High	Prev Close	Last	BVol	Bid	Ask	AVol	Strike	BVol	Bid	Ask	AVol	Last	Prev Close	High	Low	Volume															
			1.89	1.89					13.50			0.02	91		0.01																		
			1.39	1.39					14.00			0.02	91		0.01																		
			0.91	0.91	61	0.92	0.99	61	14.50			0.04	61		0.02																		
			0.47	0.47	30	0.49	0.55	121	15.00	121	0.06	0.09	60		0.09																		
			0.19	0.19	60	0.18	0.23	121	15.50	121	0.23	0.29	30	0.25	0.3	0.25	0.25	8															
			0.05	0.05	30	0.05	0.08	91	16.00	91	0.6	0.65	30		0.69																		
			0.01	0.01	30	0.02	0.03	30	16.50						1.13																		
			0.01	0.01		0.02	0.02	91	17.00						1.62																		
			0.01	0.01		0.02	0.02	91	17.50						2.12																		
			0.01	0.01		0.02	0.02	91	18.00						2.62																		
			0.01	0.01		0.02	0.02	91	18.50						3.12																		
			0.01	0.01					19.00						3.62																		
			0.01	0.01					19.50						4.12																		
			0.01	0.01					20.00						4.62																		
			0.01	0.01					21.00						5.62																		



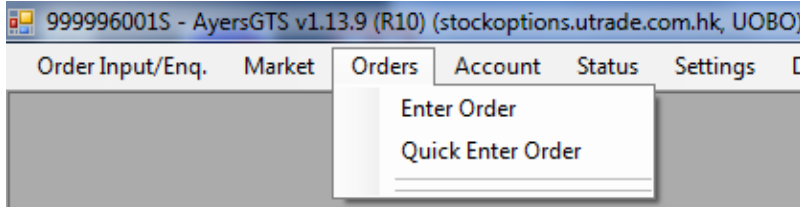
Right click to check with Price Depth and select Window Mode, including Simple Mode, Basic Mode, Advance Mode and Master Mode.

CALL OPTIONS											Center	PUT OPTIONS											
Position	OpenInt	Volume	Low	High	Prev Close	Last	BVol	Bid	Ask	AVol	Strike	BVol	Bid	Ask	AVol	Last	Prev Close	High	Low	Volume	OpenInt	Position	
					12.45	12.45					42.00						0.01					225	
					11.45	11.45											0.01					225	
					10.46	10.46											0.01					212	
65					9.46	9.46								0.02	30		0.01					1220	
23					8.46	8.46								0.02	30		0.01					1124	
224	10		8.41	8.41	7.46	8.41											0.01					1219	
569	2		6.88	6.88	6.46	6.88					48.00						0.01	0.02	0.02	5		982	
5551					5.46	5.46					49.00						0.03	0.02	0.02	5		1066	
2345	56		4.71	5.37	4.46	5.37	20	4			50.00						0.06	0.04	175		2728		
4172	1084		2.44	2.88	2.12	2.88	1	2.6	2.93	85	52.50						0.51	0.38	0.21	919		2363	
2725	323		0.68	0.97	0.61	0.96	2	0.78	0.96	20	55.00												
766	738		0.17	0.25	0.12	0.23	30	0.2	0.24	10	57.50						3.91					67	
1014	25		0.06	0.06	0.02	0.06	30	0.05	0.09	30	60.00						6.19					104	
1554	20		0.02	0.02	0.01	0.02				100	62.50						8.68						
56					0.01	0.01				30	65.00						11.18						
30					0.01	0.01				30	67.50						13.68						
					0.01	0.01				30	70.00						16.18						
					0.01	0.01					72.50						18.68						
					0.01	0.01					75.00						21.18						
					0.01	0.01					77.50						23.68						
					0.01	0.01					80.00						26.18						
					0.01	0.01					82.50						28.68						
					0.01	0.01					85.00						31.18						



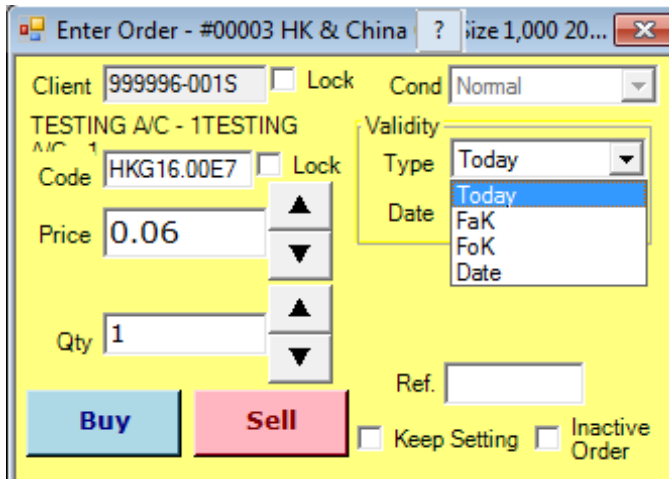
4. Order Instructions

Select “Orders” and then “Enter Order” or “Quick Enter Order” to pop up the window.



Enter Order

In Enter Order Window, after entering Product Code, Price and Qty, you can click Buy or Sell the corresponding stock options. You can also select the order type, including Today, FaK, FoK or Date. (Note: While entering the Price and Qty, the market status might change at any time.)



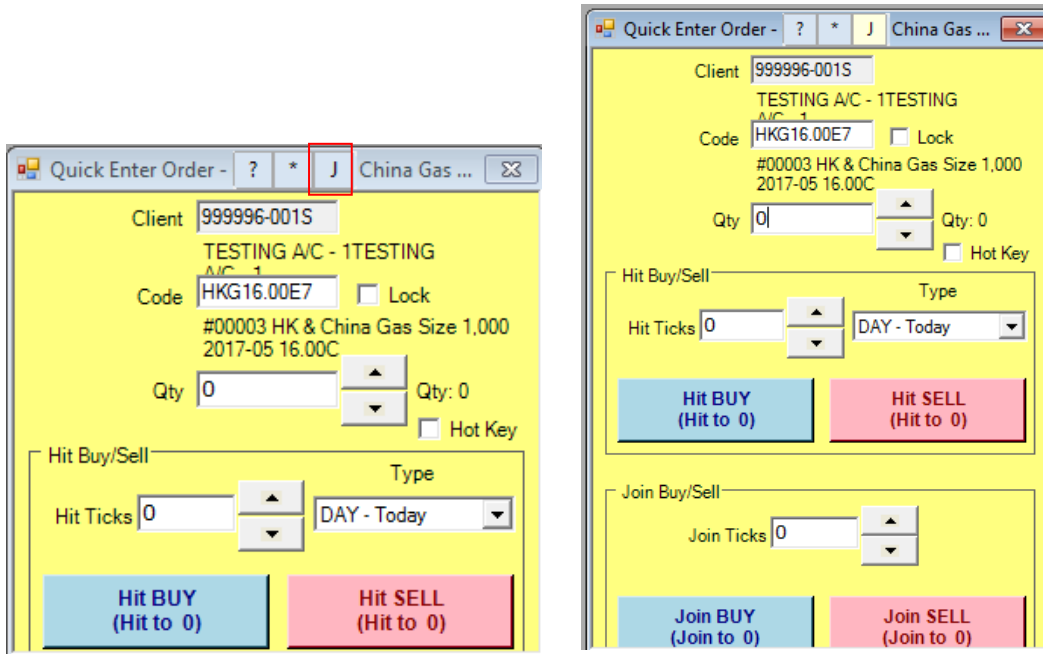
Column Explanation

Code	Product Code	
Price	Order Price	
Qty	Trade quantity	
Validity Type	FaK (Fill and Kill)	The order is to be matched immediately after submission as much as possible up to quantity specified in the Qty field, and the remaining unmatched portion, if any, of the order will be cancelled automatically by the system at once
	FoK (Fill or Kill)	The order is to be matched immediately after submission at the exact quantity specified in the Qty field or else it will be cancelled automatically by the system at once
	Today	Unmatched orders will remain in the central order book until the market close of the day
	Date	The order will remain until the specified ate
Ref	You can enter any free text information	
Inactive Order	It is not a tradable order unless you activate the order and place to the market.	



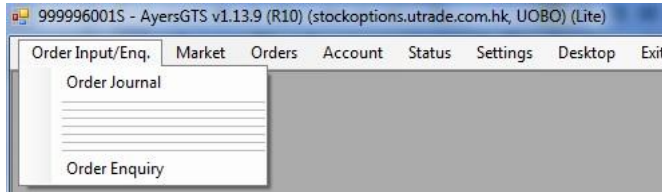
Quick Enter Order

Apart from the “Hit BUY/ SELL”, you can click “J” under Quick Enter Order Window to “Join BUY/ SELL” and quickly add a waiting order in the market for order matching with other buyers/ sellers.



5. Order Information

Click Order Input/ Enq, and then Order Journal or Order Enquiry to pop up the corresponding window.



Order Journal

Order Journal shows the detailed order information including Status, Update/ Cancel, Order No., Client A/C, Buy/ Sell, Product, Order Type, Price, Currency, Quantity, Executed Quantity, O/S Quantity, Rejected Quantity, Input Time, etc.

Status	Update/Can...	Order No	Client A/C	B/S	Product	Or..	Price	Curr..	Quantity	Executed..	O/S Qty	Rejected..	Input User	Input Time
CAN		22414	999996-001S	Buy	HKG16.00..	PL	0.54	HKD	1	0	0	0	9999960..	11:12:00 26-Apr-2017
CAN		22415	999996-001S	Sell	HKG15.00..	PL	0.7	HKD	1	0	0	0	9999960..	11:13:38 26-Apr-2017
CAN		22417	999996-001S	Buy	HKG15.00..	PL	0.02	HKD	1	0	0	0	9999960..	11:17:21 26-Apr-2017
Q		22465	999996-001S	Buy	CNC9.25..	PL	0.25	HKD	1	0	1	0	9999960..	14:36:48 26-Apr-2017

Order Status Explanation

NEW	Pending in system and has not been sent to exchange
WA	Wait for approval
PRO	Processing/ sending to exchange
Q	Queued in exchange
PEX	Partially executed
FEX	Completed
REJ	Rejected
CAN	Cancelled

Order Enquiry

After entering the order number, you can check out the order detailed information including Order Status, Product, Price, Quantity, Order Type, O/S Quantity, Reject Reason, Release Condition, Order Expiry Date, Validity, etc. You can also check about the Trade Summary, Trade Details, Amendment History and Approval Details.

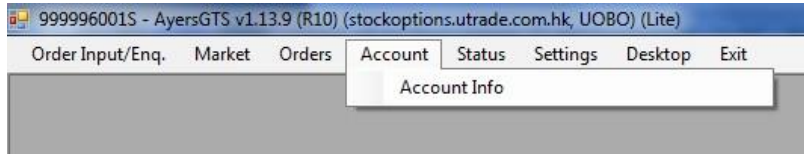
The screenshot shows the 'Order Enquiry' window with the following details:

- Order No:** 22465
- Client A/C:** 999996-001S
- Product:** CNC9.25Q7
- Price:** 0.25
- Quantity:** 1
- Order Type:** PL - Price Limit
- O/S Qty:** 1
- Order Status:** Buy (Q - Queued)
- Release Condition:** (Empty)
- Order Expiry Date:** (Empty)
- Validity:** DAY
- Input User:** 999996001S

Below the details are tabs for 'Trade Summary', 'Trade Details', 'Amendment History', and 'Approval Details'. The 'Trade Summary' tab is active, showing a table with columns: Price, Quantity, Time, Buy/Sell, and Product. The table is currently empty.

6. Account Information

Select Account and then Account Info to check with the detailed account information including Net Cash Balance, Margin, Total Equity, etc.



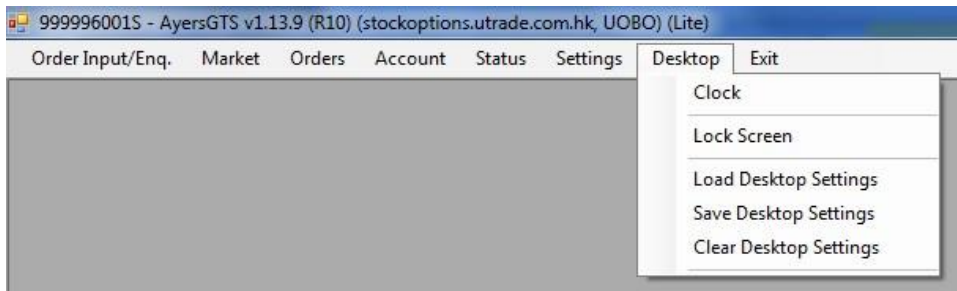
UOBKayHian 大華繼显 您可信赖的投资夥伴	
Net Cash Bal.	5,000.00 HKD
P/L	0.00 HKD
I. Margin	0.00 HKD
M. Margin	0.00 HKD
%	
Purchase Power	4,750.00 HKD
Total Option Premium	0.00 HKD
Total Option Value	0.00 HKD
Total Equity	5,000.00 HKD
Trading Limit	1.00 HKD
Margin Call	0.00 HKD

Net Cash Bal.	Net cash balance. The amount of cash in the account
P/L	Aggregate floating profit & loss of the options
I. Margin	Initial margin requirement
M. Margin	Maintenance margin requirement
%	The percentage ratio of the net cash balance and initial margin
Purchase Power	Cash balance minus initial margin
Total Option Premium	Total amount of "Sell" and "Put" option premium received or paid
Total Option Value	The total market value of your all stock options position
Total Equity	Net cash balance minus total option value
Trading Limit	Trading limit of opening short positions. Long options are not included as the premium is deducted in the net cash balance
Margin Call	When the cash balance is less than maintenance margin, the amount that should top up will be shown (Initial margin minus cash holding)



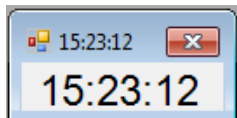
7. Display Setting

Click Desktop for display setting including Clock, Lock Screen, Load Desktop Settings, Save Desktop Settings and Clear Desktop Settings.



Clock

Select Clock to check with the time from HKEx.

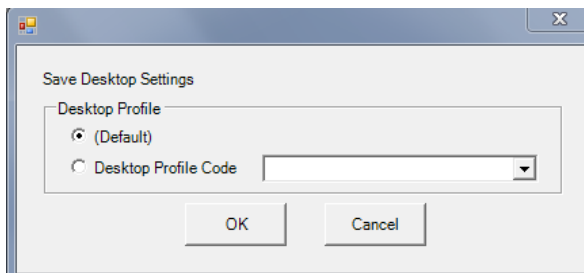


Lock Screen

Click Lock Screen to lock the system and prevent improper use from others when you are away.

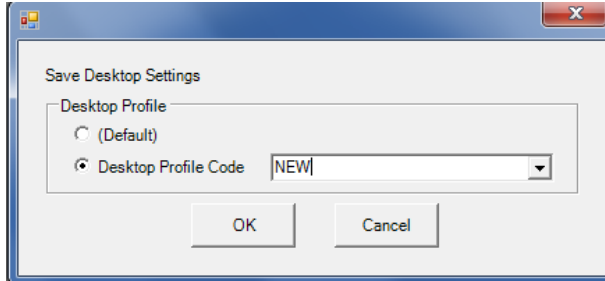
Save Desktop Settings

All window sizes and positions are adjustable. You can open multiple windows and execute multiple tasks simultaneously. Click Save Desktop Settings to save your customized window arrangements. If you save as the Default, the system will automatically display the default arrangements when it is opened next time. You can as well save other window arrangements by selecting Desktop Profile Code and entering a customized name. Click OK to save.



Load Desktop Settings

Click Load Desktop Settings to select default or customized window arrangement display.



Assistance:

Should you require any assistance, please contact your Account Manager or our Client Services Department at (852) 2136 1818



ONLINE TRADING
MADE EASY