



**UTRADE 期貨**網上交易系統用戶使用指南  
**UTRADE Futures Online Trading System User Manual**

## 軟件安裝程序

### Software Installation

第一步

Step 1

到我們的網頁

<http://www.utrade.com.hk/tc/Platforms/UTRADE-Futures#download-now>

下載 **UTRADE 期貨**網上交易系統到桌面。

Visit our website

<http://www.utrade.com.hk/en/Platforms/UTRADE-Futures#download-now>

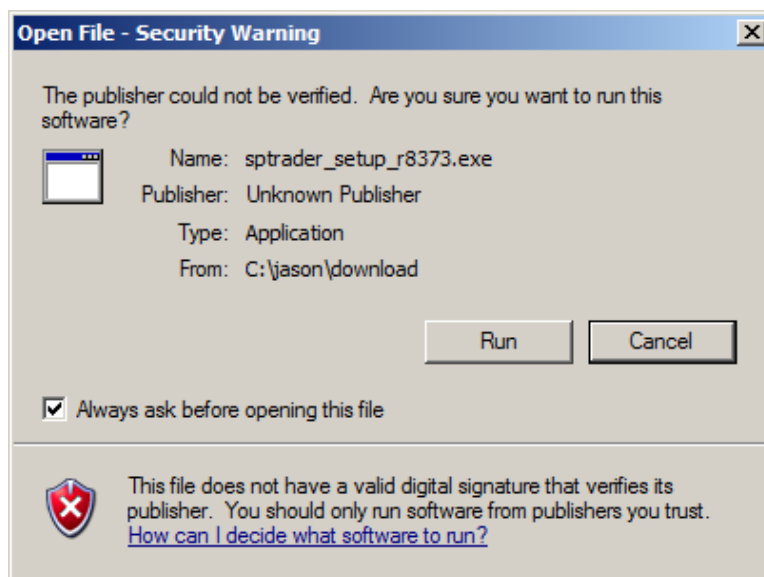
and download **UTRADE Futures** SP System application to your Windows desktop.

第二步

Step 2

您可以選擇“開啟”檔案，開始進行下載，下載完畢請執行安裝檔案。

You may choose “Open” to download the program, and “Run” the setup program after downloaded.



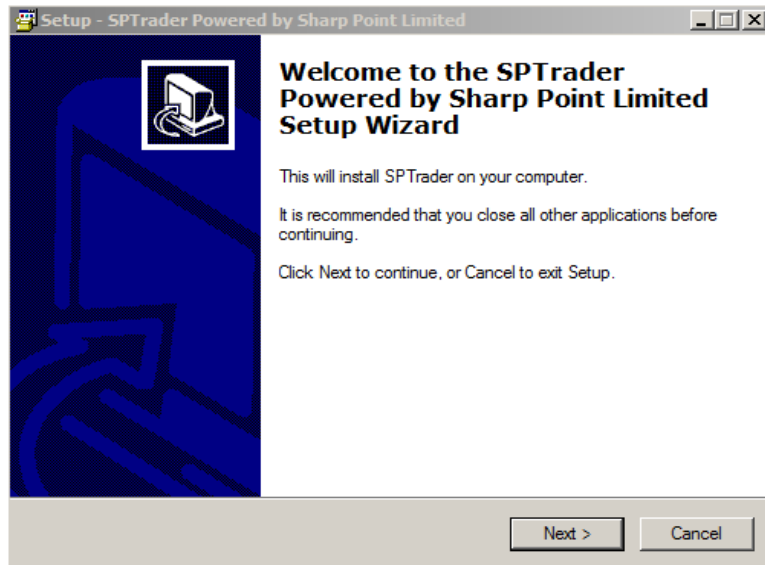


### 第三步

#### Step 3

當啟動安裝程式之後，會出現視窗歡迎您使用 SP 系統，請按 “Next >” 繼續下一步。

A welcome dialogue box will appear reminding you to close all other running programs. If there are none, click "Next >" to continue.

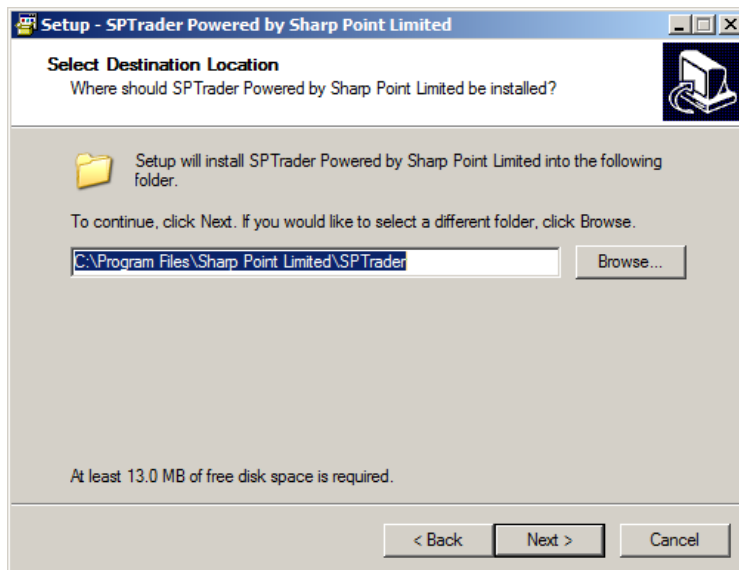


### 第四步

#### Step 4

如果不改變預設的資料夾，請按 “Next >” 繼續下一步。

A destination directory is chosen by default to store the program. You can choose another Installation directory by clicking Browse. Click "Next >" button to continue.



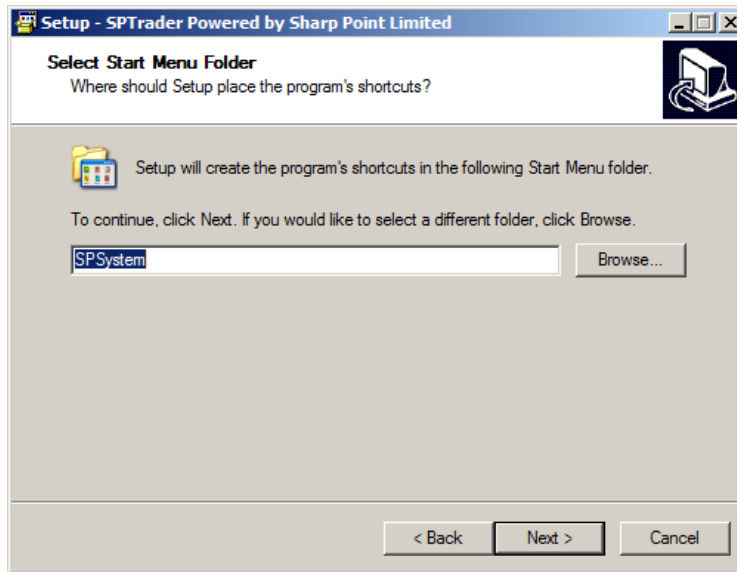


## 第五步

### Step 5

如果不改變程式集的命名，請再按 “Next >” 。

It is chosen as the default Program Folder where Installation Wizard installs application shortcuts. Click "Next >" button to continue or choose another program folder from the list.

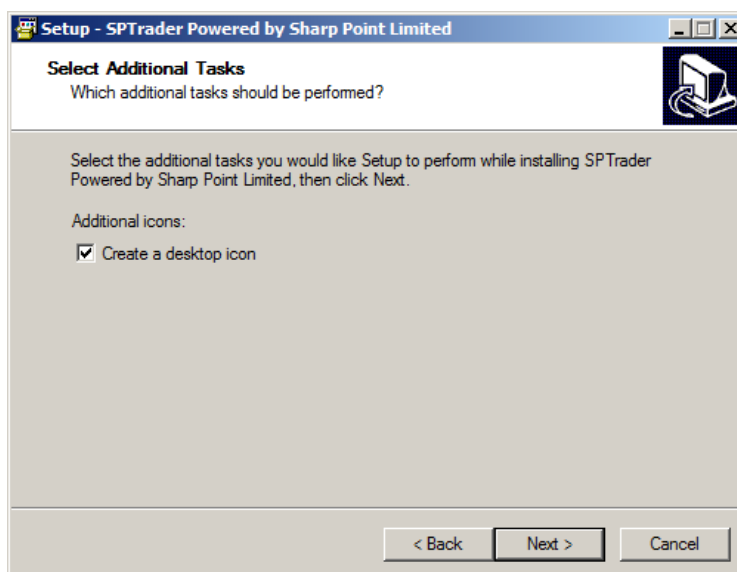


## 第六步

### Step 6

再按 “Next >”

Select the "Next >"



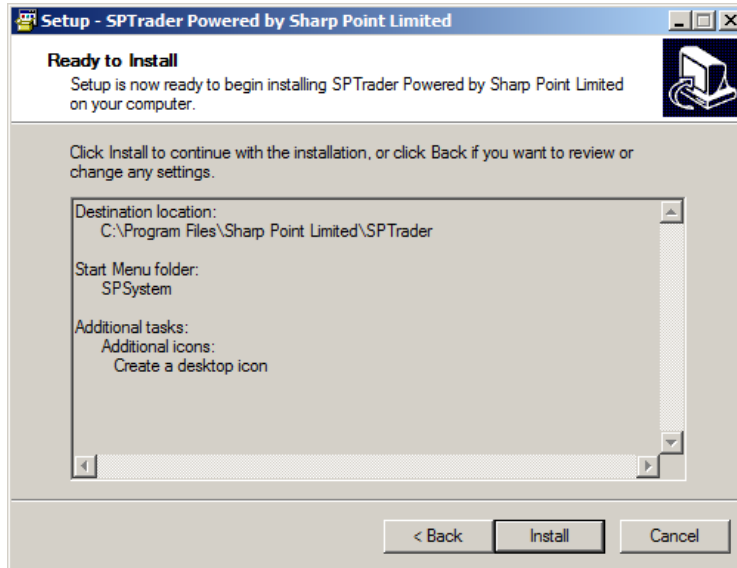


第七步

Step 7

再按 “Install” 確定安裝正式進行。

Setup is now ready to begin installation, select the "Install" button to begin.

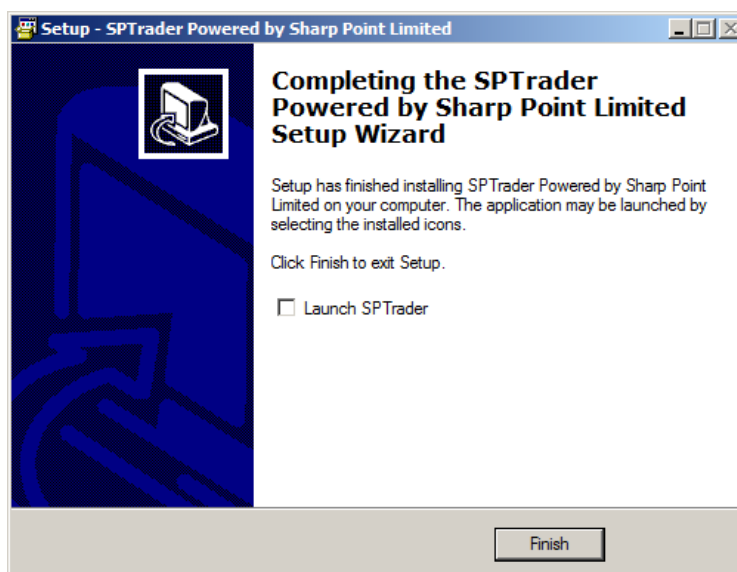


第八步

Step 8

最後按 “Finish” 完成 SP 系統的安裝。

SP System application has been successfully installed. To exit setup select "Finish".





## 怎樣啟動和關閉 SP 系統

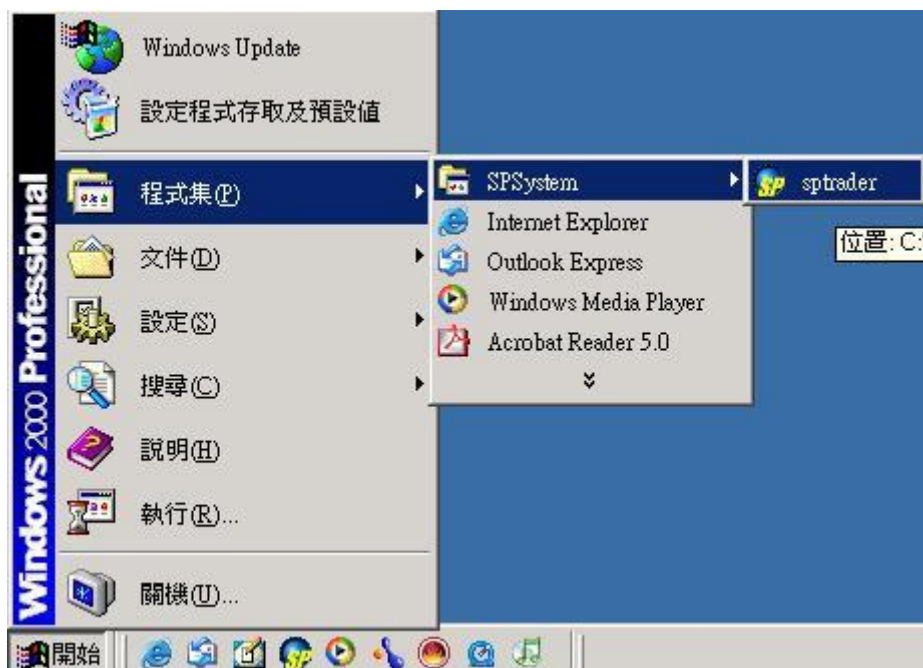
### How to start and exit SP System

啟動應用程式

Start Application

從“開始”功能表啟動 SP 系統

Start the SP System application from the start menu.





登入

## Login

請設定網域為：futures.ustrade.com.hk

輸入你的使用者以及密碼，然後點擊“同意及登入”，SP 系統的視窗將會出現。

Please fill in Host: futures.ustrade.com.hk

Enter your user ID and password, then click “Accept & Login”. The SPSystem window will appear.

SSL Login

EN English 繁 中文繁體 簡 简体中文

Profile

Host   Proxy

2nd Host  (Optional)  Port 80

3rd Host

User Id   Save User Id

Password

Powered by Sharp Point Ltd. [www.sharppoint.com.hk]

Disclaimer

I have reviewed and confirm the accuracy of my instruction before entering it, and I hereby undertake that my instructions and all information supplied by me in connection therewith are true and accurate. I agree to indemnify you on demand for any losses, damages, costs expenses or claims which you may suffer arising from your reliance on the instructions or information I have given through or in connection with this service.

I instruct you to execute my instructions without further reference

Auto Re-login



登出

**Logout**

請選擇系統功能表“檔案”下的“登出” 選項

To logout, please select “Logout” under “File” in the system menu

